

## PENS DEVICES



CODE	DESCRIPTION
IS01	i-STIM Generator



CODE	DESCRIPTION
BPP-2135IL	i-PROBE bipolar needle, 21G, L. 35mm - infusion line
BPP-2170IL	i-PROBE bipolar needle, 21G, L. 70mm - infusion line
BPP-21100IL	i-PROBE bipolar needle, 21G, L. 100mm - infusion line
BPP-21120IL	i-PROBE bipolar needle, 21G, L. 120mm - infusion line
BPP-2235IL	i-PROBE bipolar needle, 22G, L. 35mm - infusion line
BPP-2270IL	i-PROBE bipolar needle, 22G, L. 70mm - infusion line
BPP-22100IL	i-PROBE bipolar needle, 22G, L. 100mm - infusion line
BPP-22120IL	i-PROBE bipolar needle, 22G, L. 120mm - infusion line



**AMS Group S.r.l. soc. unip.  
Advanced Medical Systems**

Via Europa, 12 | 35020 San Pietro Viminario (PD) Italy  
Tel. +39 0429 719378 | Fax +39 0429 760135  
info@amsvita.com | www.amsvita.com  
ISO standards 13485:2016 and 9001:2015

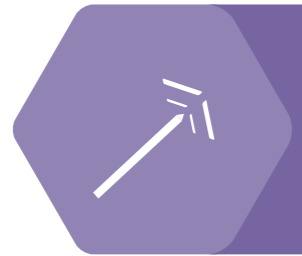
Rev. 00 03/2020 EN



The exclusive interactive system designed for  
Percutaneous Electrical Nerve Stimulation: PENS



1



## Precision

The precise reading of impedance permits the exact identification of the target painful area

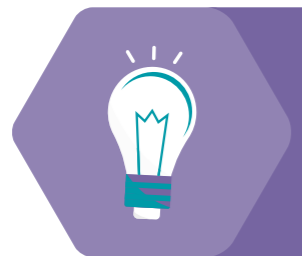
2



## Effectiveness

i-PROBE performs the percutaneous neurostimulation treatment with bipolar technology, assuring maximum effectiveness and long-lasting relief

3



## New

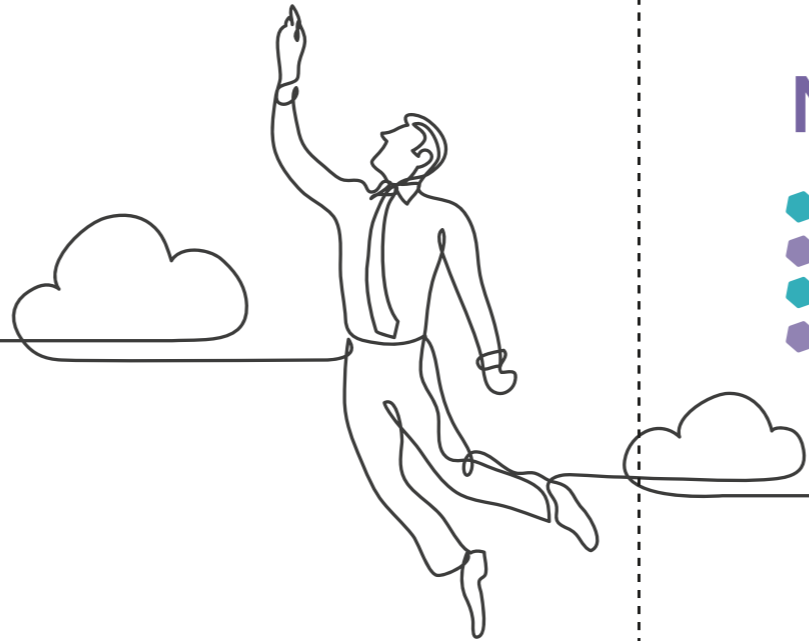
The integrated i-STIM and i-PROBE system is made using the best digital technology applied to the PENS treatment, for a custom and exclusive therapy for each patient

4

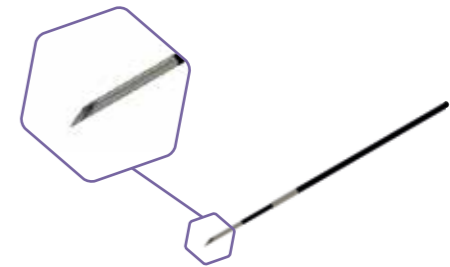


## Safety

i-STIM 7" touchscreen shows real-time electric and physiological parameters during the performance of the treatment



# INNOVATION CLOSE AT HAND



i-STIM and i-PROBE are developed to perform the PENS treatment intuitively and effectively with unique characteristics such as:

- EXCLUSIVE MINIMALLY INVASIVE BIPOLAR PROBE WITH DEDICATED INFUSION LINE AND INTEGRATED ECHOGENIC MARKINGS
- IMPEDANCE READING FOR THE IDENTIFICATION OF THE RIGHT PAIN GENERATOR
- TELEMETRIC READING OF THE NEUROMODULATION PARAMETERS DURING THE TREATMENT ON TWO SEPARATE CHANNELS
- DATA STREAMING (UNIVERSAL USB)

## MAIN THERAPEUTIC INDICATIONS

- ALLODYNIA
- OCCIPITAL, TRIGEMINAL AND SUPRAORBITAL NEURALGIA
- PHANTOM LIMB PAIN
- POSTHERPETIC NEURALGIA
- BACK PAIN, CERVICAL PAIN AND LUMBOSACRAL PAIN
- SCAR TISSUE PAIN AND POST-SURGICAL PAIN
- FRONTAL LOBE AND TEMPORAL HEADACHE
- PREDICTIVE TESTING FOR PERIPHERAL NEUROSTIMULATION